



Scan QR code to focus upon Sail Intelligent Elevator 3D Cartoon



Scan QR code to focus upon Sail Intelligent Elevator Advertisement



Scan QR code to focus upon Sail Intelligent Elevator Website

 Service hotline **400-8866-350**

SAIL | Sail Intelligent Elevator(Suzhou) Co.,Ltd.

Address: no.999, Badu Lingang Development Zone (Fenglin Bay) Zhenze Town,
Wujiang District, Suzhou City, jiangsu province
Tel : 0512-63825632 Fax : 0512-63825700
Http : //www.szsail.com E-mail : //sail@szsail.com

It is an ordinary information publication. We keep the right of alter the product design and description at any time. If there is any dispute out of the literal meaning of any product description, use or quality; the description and alteration of any sales contract, our company will not bear any responsibilities there-from.
Because of the restriction of the printing technology if there is any slight difference between the actually machining color and that from this pamphlet, please take the actual material and color sample as the criterion.
Printed in June 2017

STM 盛隆传媒 0573-88133500 13511315781

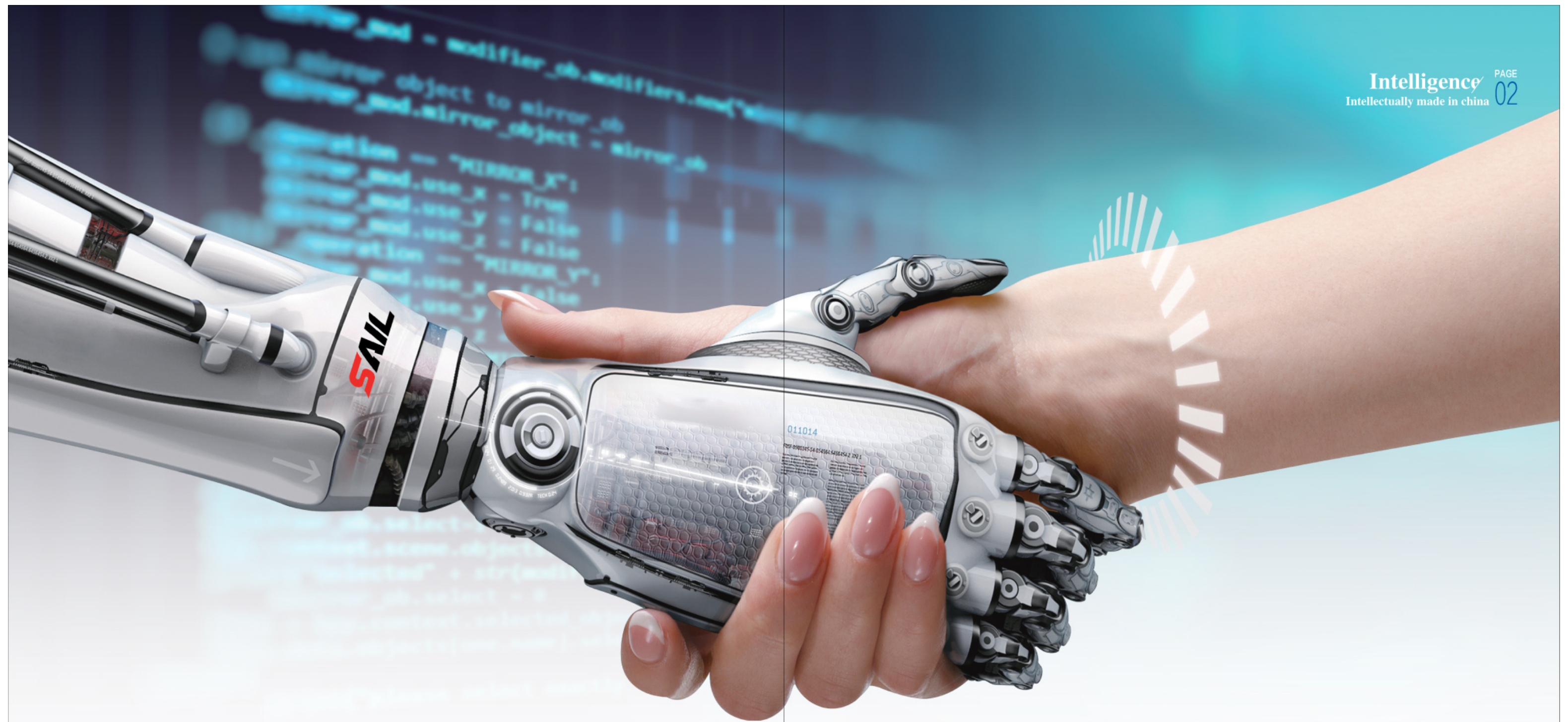
SAIL

HIGH TECHNOLOGY
FULFILLS A BRIGHT FUTURE

FREIGHT ELEVATOR SERIES

Sail Intelligent Elevator(Suzhou) Co.,Ltd.





Focus upon **intellectual** elevators
Lead new concept
of future elevators

Intellectual times, summit conference.
Wisdom appears invisible and peaceful.
Let' s hug intellectual manufacture and gather together
innovative cohesion.
The building is endowed with unique charm because
of magical & flexible space.
Let' s wisely compose a bright future of intellectual
made in China.

Optimized intellectual properties

Bear any heavy load at ease



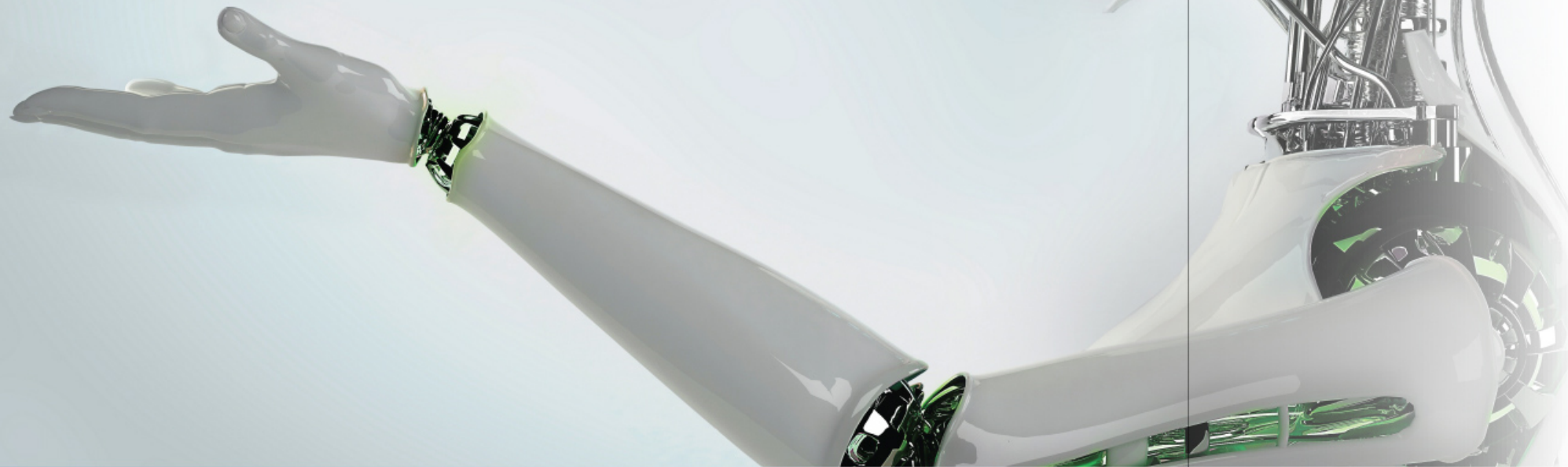
It purifies the power grid environment



It improves the machine room temperature



Above 30% of energy-saving rate



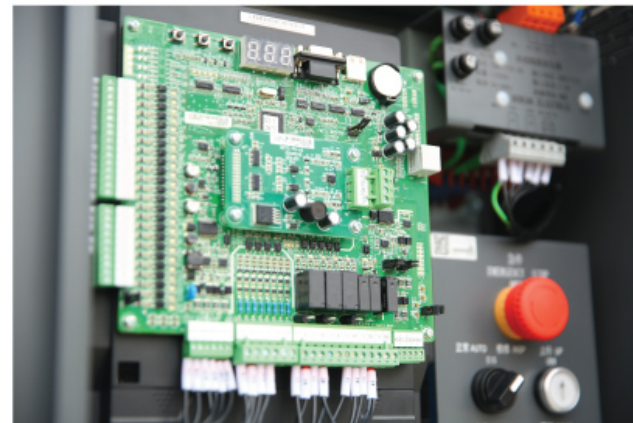
VVVF frequency conversion door machine system

Door opening device applies variable frequency control mode. Frequency changer can accurately control car door opening / closing speed. Passengers can thus safely travel the elevators. It passes experimental certification from Authoritative State Elevator Test Center. It monitors elevator door load change at each floor. It automatically adjusts the most proper opening / closing speed at each floor in order to ensure safe and reliable operation.



Variable Frequency Host

Variable frequency asynchronous traction host features as safe & energy-saving, effective, low noise, little vibration, smooth running, fine lubricating properties, advantageous performance. It greatly satisfies the users' high demands towards stable elevator, energy-saving, smooth operation.



32CPU control technology

Integrated innovative technology applies the latest Monarch original control cabinet technology control and drive integrated design. It simplifies inner control cabinet design. It reduces connecting wires. It enhances reliable operation. Double 32-digit CPU control technology perfectly shows the systematic performance with safe and reliable green environment protection, rich functions.

Safe and reliable structure and high intensity

High strength sheet bending & forming technology ensures firm and durable car. In addition, optional specially-designed anti-collision guardrail carries out multiple protection to elevator car.



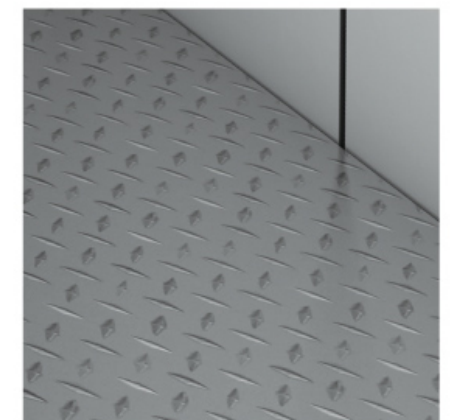
Durable in use stable in operation

Sail freight elevator creates famous brand by small advantages. The product leveling accuracy can be controlled within mm level range.



Light curtain protection

Sail freight elevator applies high intensity section material to make the elevator car. It implements special reinforced design to car chassis. The products are more durable with little aging after long-term use.

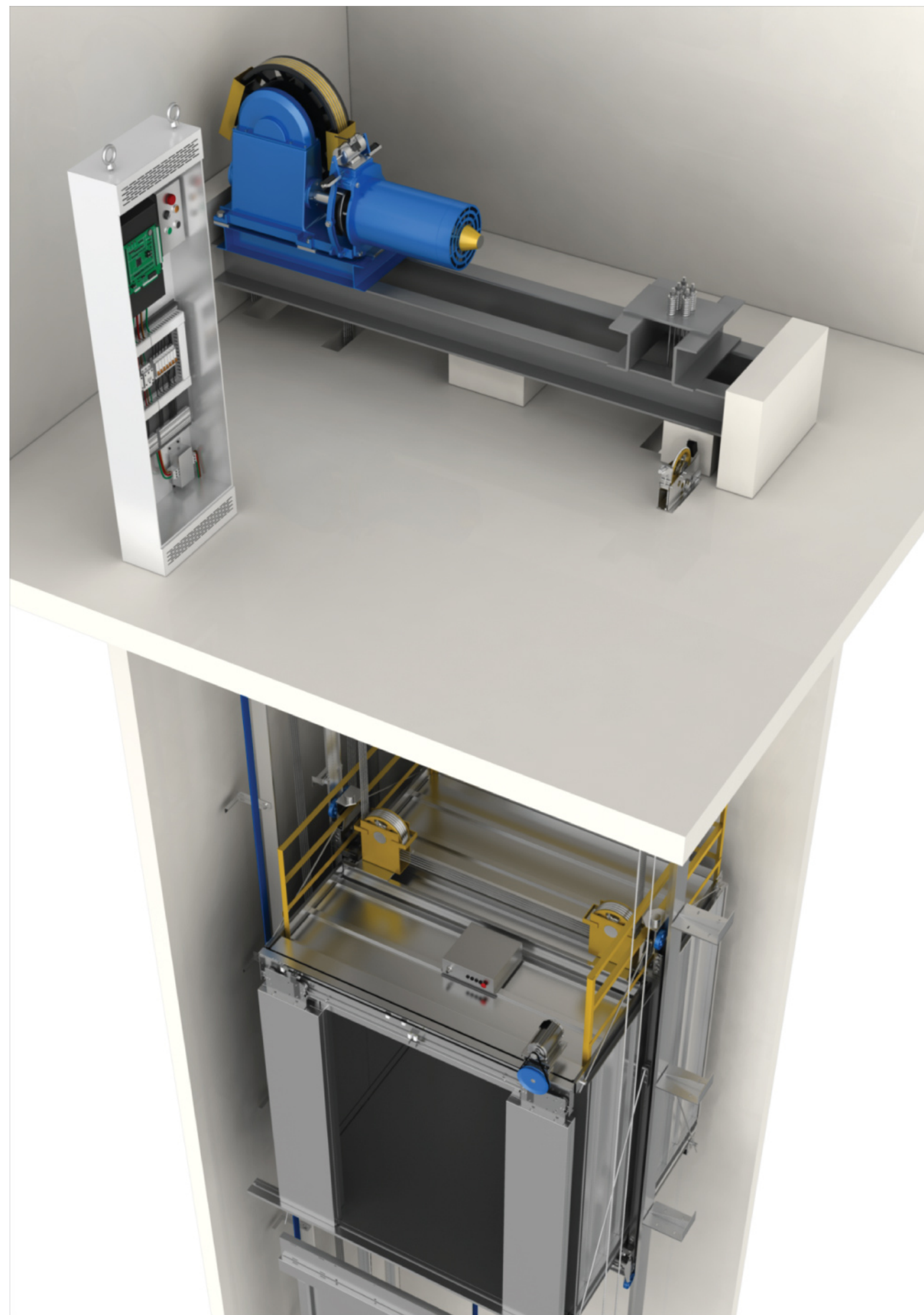


Freight Elevator

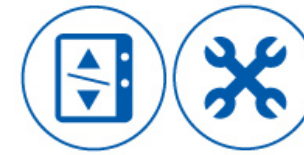


Sail freight elevator combines with top grade elevator engineering technology etc. It can hold a large amount of goods because of fierce drag system, highly strengthened mechanical structure design. It still operates well under various harsh environments. It features as effective & reliable, firm and durable, precise leveling etc. It is widely applicable for vast goods transport occasions such as factory, warehouse, shopping center and so on.

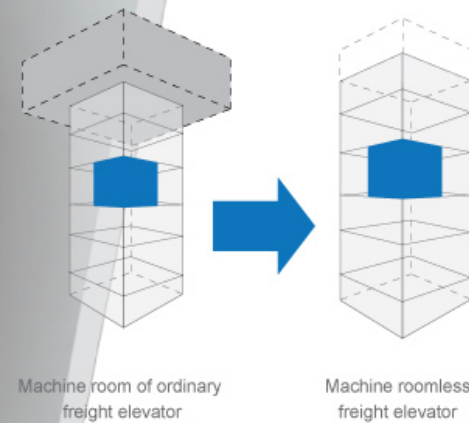
Main product applicable occasions



Machine Room-less Freight Elevator

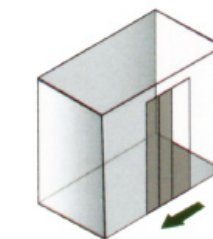


Sail machine room-less freight elevator takes low-carbon environment-protection as design ideas with good energy-saving and consumption-reducing. It utilizes well space to maximum extent. It aims at saving building area and reducing construction cost. It gives a full play of the products' green human-centered spirits. Compared with same load level geared elevator, it saves 40% of electric energy, 10% of building area.

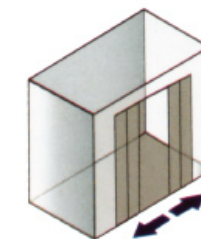


It saves 25% of total elevator equipment area. It reduces 40% of space occupation.

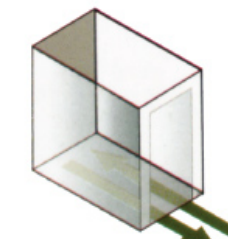
Door opening mode



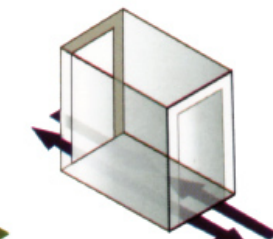
Side-opening double-folded door



Center opening folded door



One-way door



Opposite door

Dumbwaiter Elevator

Sail dumbwaiter provides small freight elevator in various buildings with prompt, convenient, economical vertical transport. It greatly saves time and labor resource. It is widely applicable for delivering food, drink, dining ware, daily products etc. in hotel, restaurant, bank, hospital and so forth.



Automobile Elevator

Sail automobile elevator introduced the well-developed international automobile elevation technology. Automobile elevator has been developed and manufactured through absorption, conversion and enhancement. Advanced technology removes bad factor of shaking car. It is due to noise out of burdened traction system, uneven force to elevator car. It optimizes the characteristics of the product series.



Window type (straight up / down)



Floor type (straight up / down)



Standard Car Introduction



SA-HJT01 Standard

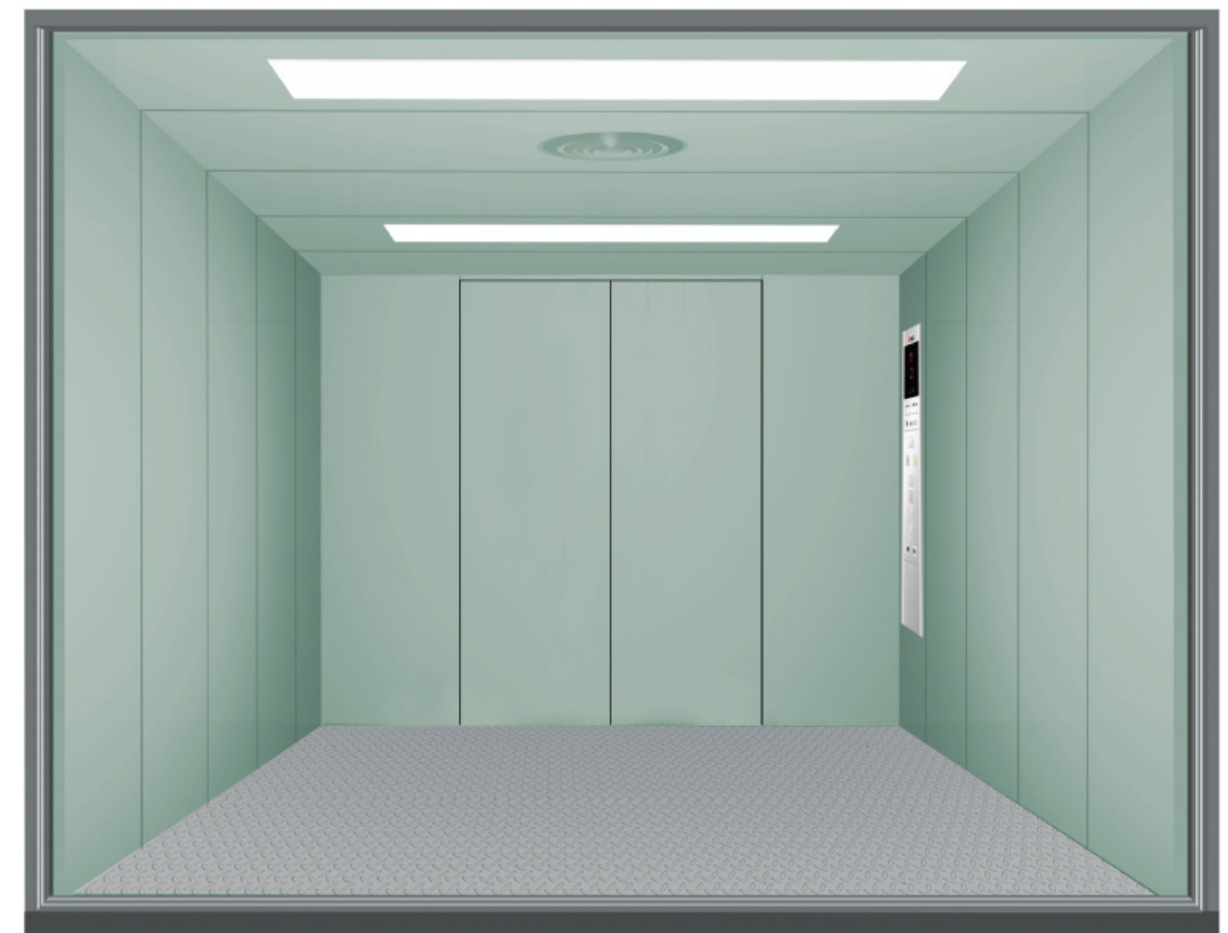
Car top: Painted steel plate

Car wall / car door: Painted steel plate

Lighting: Energy-saving lamp

Door opening mode: Side opening

Floor: Checkered steel plate



SA-HJT02 Optional

Ceiling: Painted steel plate

Car wall/Car door: Hairline stainless steel

Lighting: Energy-saving lamp

Door opening mode: Center-opening & doublefolded type

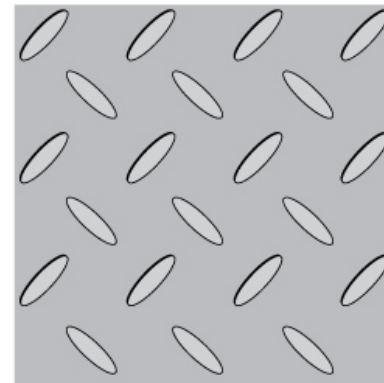
Floor: Checkered steel plate

Man-machine Interface Introduction



Panel material: Hairline stainless steel
Button: Square button
Display screen: Matrix display

Floor



Checked steel plate I (Standard)

Landing door Series



SA-HT01
Side opening



SA-HT02
Center opening



SA-HT03
Double-folded center opening type



SA-HT04
3-Folded center opening type

Color card



SA-S-01
Jewelry blue



SA-S-02
Ivory



SA-S-03
Orange gain gray



SA-S-04
Orange gain yellowish gray



SA-S-05
Egg blue

Perfect function

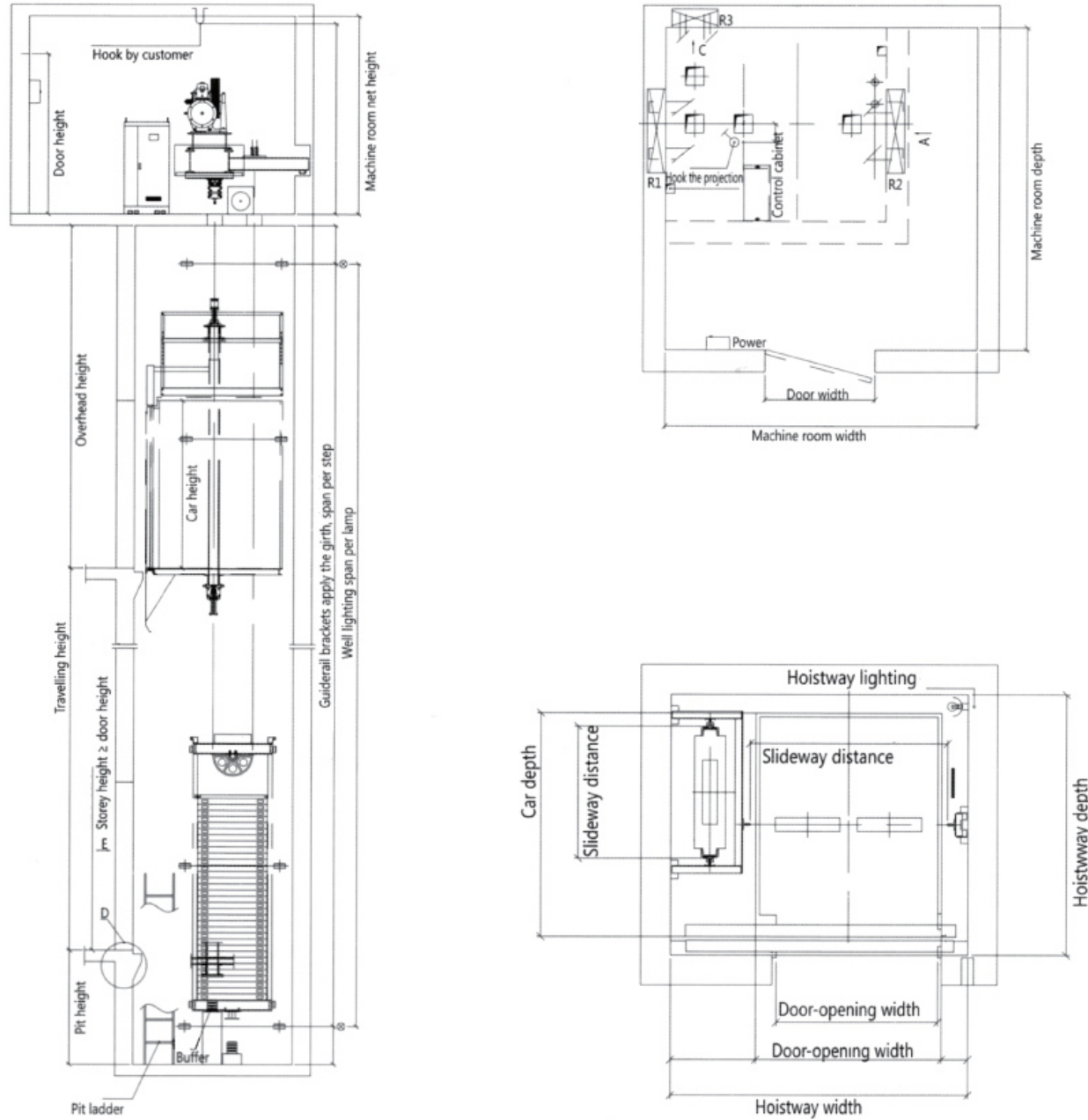
S – Standard Function O – Optional Function

Running Function		
S	Automatic running	When there is no attendant who operate elevator, elevator will run to the destination floor according to the instruction of passengers automatically.
S	Attendant running	Elevator is operated by attendant, attendant press car calls as request of passengers and elevator will run to the destination floor according to the car calls.
S	Automatic adjustment of door open holding time	According to current registered landing call and call call situation, system will automatically adjust the door open holding time.
S	Door re-open at current floor	When door is closing, door can re-opened by pushing landing call button at current floor.
S	Car call cancel	If passengers press the wrong floor button in car, same button press it again can cancel the wrong register.
S	Parking	When electric key switch is turn off, elevator enters into parking state, it will not serve to any landing call.
O	Door close delay	Pushing the door open button in car can prolong the door open state for a period.
O	Fire emergency return	In fire emergency state, all landing calls are eliminated, elevator runs to the preset floor and open door.
O	Double door control	By setting, system can control double door' s action on corresponding floor.
O	Arrival gong	Arrival gong on the car top advices passengers that elevator arrives.

Safety function		
S	Light curtain protection	When light curtain is sheltered, door will stop closing at once and automatically open.
S	Overload stop	When elevator is overload, elevator door keeps opening, buzz rings and elevator stops at the current floor.
S	Inspection operation	When elevator enters into inspection state, car runs in jog state.
S	Troubleshooting	Controller can record faults in memory to facilitate the fault elimination and restore elevator running.
S	Auto-landing with fault	When there is any fault occurred in elevator running, when safety circuit is valid, elevator lands to the nearest floor.
S	Door close repeat	On normal mode, after running door close command, if door inter-lock circuit isn' t connected, elevator opens door and closes it again.
S	Top/bottom limit and final limit protection	The devices can prevent elevator from crashing to the top or bottom of hoistway in case that elevator is out of control with fault. It ensures the safety and reliability.
S	Down running protection	When elevator runs down in over speed, this device cuts off the control power to stop the motor running, speed limiter is motivated to force elevator to stop and ensure the safety.
S	Up running protection	When elevator runs up in over speed, the device forces elevator to decelerate and braking.
S	Safety circuit protection	When elevator circuit is open or contacts are adhered, elevator stops running at once.
S	Door interlock protection	Only all doors are completely closed, elevator can run. When door interlock contacts are adhered, elevator stops running at once.
S	Main contactor protection	System detects if the main contactor acts reliably, if any abnormal is detected, elevator stops running at once.
S	Brake detecting protection	System detects the brake state, if there is any abnormal or braking contacts are adhered, elevator can' t start running.

Human-machine Interface		
S	Sub-C.O.P.	It is for building with crowded passengers, it facilitates passengers to register call.
S	IC card control	All (part) of the floors need entry approval, only with IC card can run the elevator.
O	Micro push button	C.O.P. and H.O.P. both adopts new micro push button.
O	Running state display	System can indicates running direction, floor, door state, default ect.
O	Non-stop floor set	Set the non-stop floor according to the customer' requirement.
O	Homing floor set	Set the homing floor according to the customer' requirement.
O	Hoistway self-learning	Through hoistway self-learning, system can measure out the distance between each floor and record them permanently.
Emergency Function		
S	Emergency lighting	When power is off, car emergency light is on automatically.
S	Emergency electric operation	When elevator enters into emergency electric operation state, elevator runs in low speed inching running.
S	5-way intercom	Communication between car inner, car top, machine room, pit and security room through intercoms is realized.
S	Alarm bell	In emergency situation, pressing the alarm bell button on C.O.P. continuously , alarm bell on car top will ring.
O	Automatic Rescue Device (ADR)	When power is off, this device supplies power to elevator, elevator runs to the nearest floor, open its door and evacuates the passengers.
Energy Saving		
S	Fan& light automatic off	If there is no car call or landing call in a preset time, car inner fan and light will be automatically off.
Monitor function		
O	Traction machine monitor	The monitor for machine room less elevator installed on the traction machine top can monitor the traction machine state.

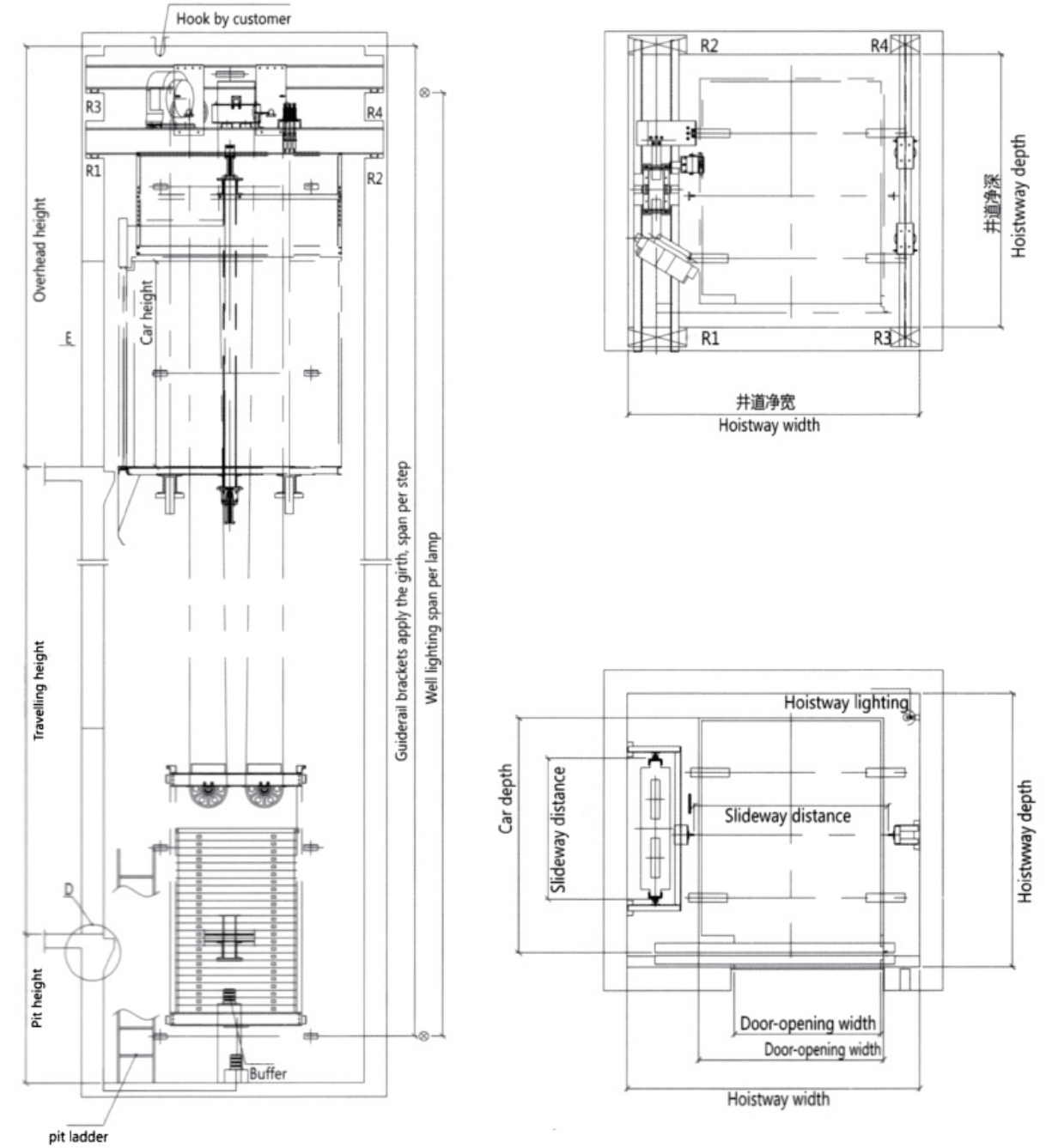
Freight elevator construction sketch



Elevator type	Rated capacity	Rated Speed	Door opening mode	Hoistway size		Car size		Door opening Size		Overhead height	Pit epth
				Net width x net depth	Outer width x outer depth	Net width x net depth	Net width x net height	Net width	Net height		
THJ1000/0.5-JXW(VVVF)	1000	0.5	双折左开式	2400x2100	1500x1800	1440x1674	1300x2100	≥4500	≥1500		
THJ2000/0.5-JXW(VVVF)	2000	0.5	双折左开式	2800x2600	2000x2300	1940x2174	1500x2100	≥4500	≥1500		
THJ2000/0.5-JXW(VVVF)	2000	0.5	双折对开式	3000x2600	2000x2300	1940x2108	1500x2100	≥4500	≥1500		
THJ3000/0.5-JXW(VVVF)	3000	0.5	中分双折式	3400x3100	2200x2800	2140x2674	1800x2100	≥4500	≥1500		
THJ3000/0.5-JXW(VVVF)	3000	0.5	中分双折对开式	3400x3100	2200x2800	2140x2608	1800x2100	≥4500	≥1500		
THJ5000/0.5-JXW(VVVF)	5000	0.5	中分双折式	3800x4200	2400x3900	2340x3774	2200x2300	≥5000	≥1500		
THJ5000/0.5-JXW(VVVF)	5000	0.5	中分双折对开式	3800x4200	2400x3900	2340x3708	2200x2300	≥5000	≥1500		

(The data is for design reference only. Regarding detailed parameters, please take technical drawing as criterion.)
Note: If specification exceeds above range, please contact FUSIJG Elevator Company.

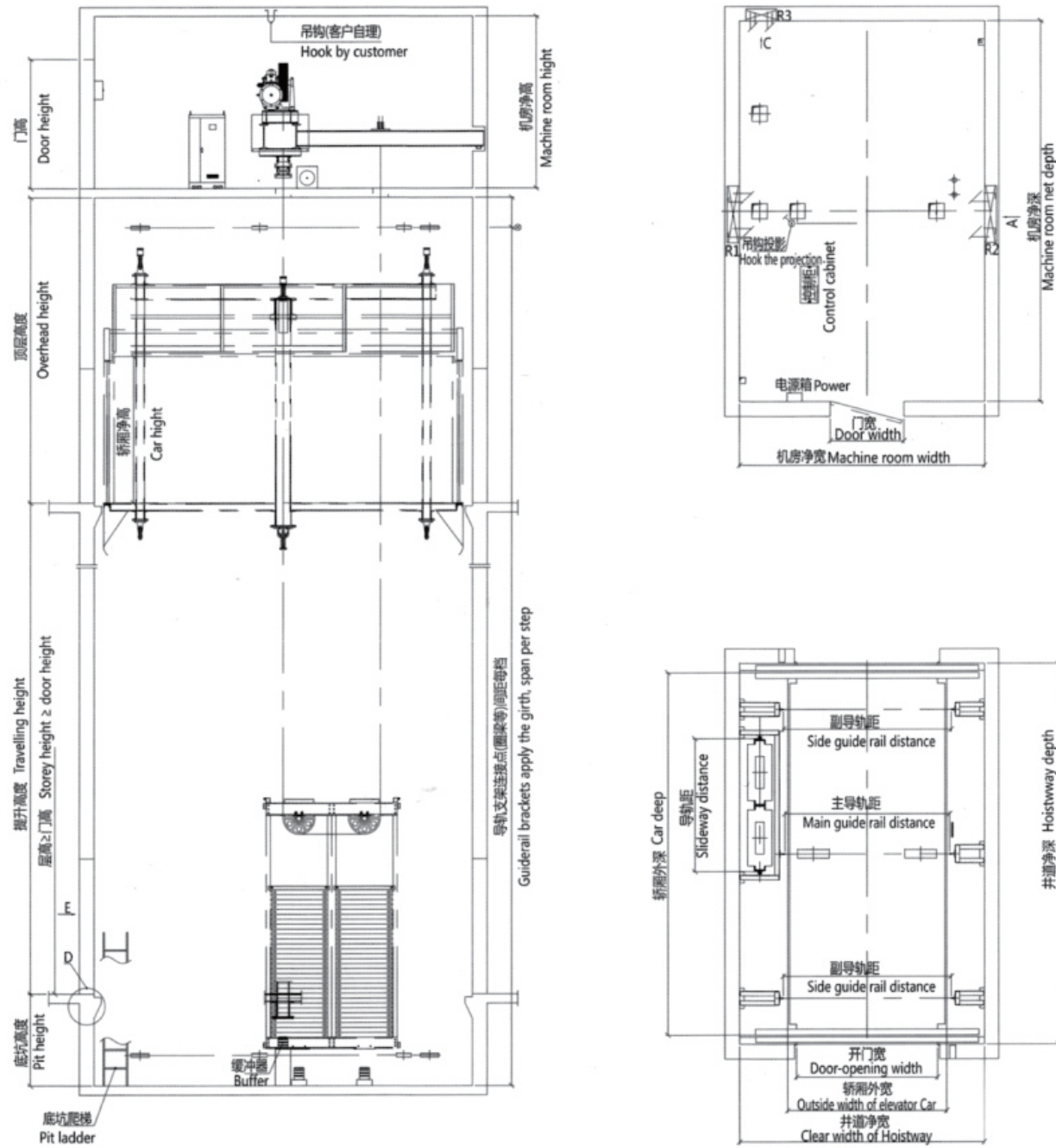
Machine room-less freight elevator construction sketch



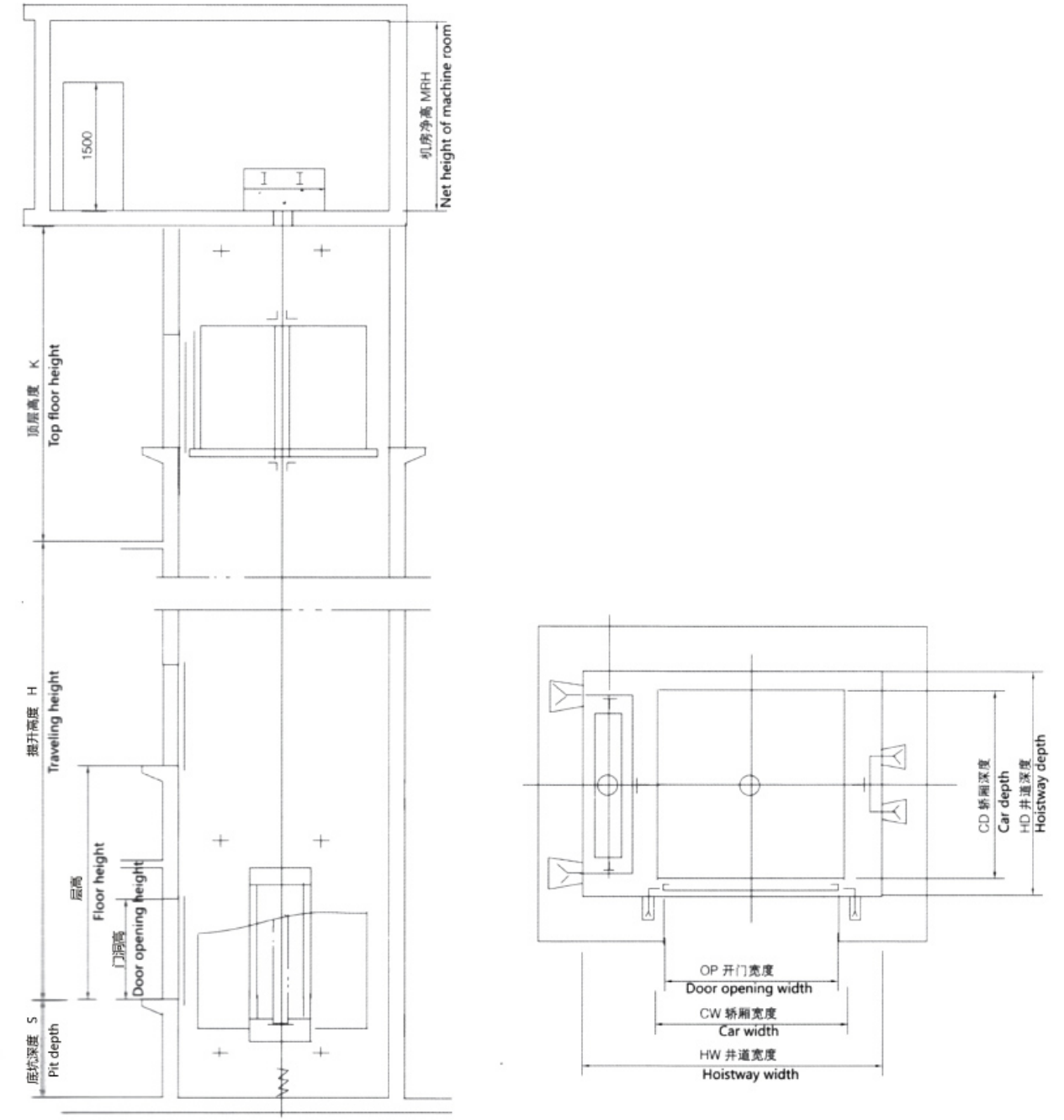
Elevator type	(kg) Rated capacity	(m/s) Rated Speed	Door opening mode	Hoistway size		Car size		Door opening Size		Overhead height	Pit epth
				Net width x net depth	Outer width x outer depth	Net width x net depth	Net width x net height	Net width	Net height		
THJ2000/0.5-JXW(VVVF)	2000	0.5	旁开双折式	3000x2800	1900x2400	1840x1674	1500x2100	≥4500	≥1600		
THJ2000/0.5-JXW(VVVF)	2000	0.5	旁开双折对开式	3000x2800	1900x2800	1840x2174	1500x2100	≥4500	≥1600		
THJ3000/0.5-JXW(VVVF)	3000	0.5	中分双折式	3700x3100	2300x2700	2240x2574	1800x2100	≥4500	≥1600		
THJ3000/0.5-JXW(VVVF)	3000	0.5	中分双折式	3700x3100	2300x2800	2340x2608	1800x2100	≥4500	≥1600		

(The data is for design reference only. Regarding detailed parameters, please take technical drawing as criterion.)
Note: If specification exceeds above range, please contact FUSIJG Elevator Company.

Automobile elevator construction sketch



Dumbwaiter elevator construction sketch



Elevator type	(kg) Rated capacity	(m/s) Rated Speed	Door opening mode	Hoistway size		Car size		Door opening Size	Overhead height	Pit depth
				Net width x net depth	Outer width x outer depth	Net width x net depth	Net width x net height			
THJ1000/0.5-JXW(VVF)	3000	0.5	中分双折式	4000x6200	2600x5900	2540x5708	2300x2300	≥5000	≥1500	

(The data is for design reference only. Regarding detailed parameters, please take technical drawing as criterion.)
Note: If specification exceeds above range, please contact FUSIJG Elevator Company.

(KG) Load	(M/S) Speed	Car size			Door opening Size		Hoistway size					Machine room size
		CW	CD	CH	OP	OPH	HW	HD	K (Freight)	K (Machine room-less)	S	
100	0.4	750	750	1000	700	1000	1200	900	3600	4800	750	2000x2000x1800
200	0.4	1000	1000	1200	950	1200	1450	1150	3000	4200	1000	

(The data is for design reference only. Regarding detailed parameters, please take technical drawing as criterion.)
Note: If specification exceeds above range, please contact FUSIJG Elevator Company.

24-hour customer service hotline

Sail Intelligent elevator owns the powerful service team. They offers 24-hour all-weather safeguard for your passenger flow. Our repair & maintenance staff stress upon safe and practical properties with rapid response. They rush to the site as soon as possible. They go all out to provide you with effective long-term solution plans.

Long-distance monitor

Various repair & maintenance networks execute real-time monitor to running elevators through preset intellectual building system interface (i.e. long-distance monitor interface). If there is something wrong with elevator, it notifies after-sale staff to promptly solve the problem as soon as possible. It guarantees 365-day 24-hour safe & reliable elevator operation.

Specialized installation system

It persists in human-centered principle. It applies effective and precise customer management system and technical training system. It is equipped with professional installation team with rich experience. It regularly provides installation team with skill and safety training. It enhances their professional capabilities. It constructs an excellent installation team in elevator industry. It supplies all-round considerate service from ordering, booking to delivery and installation flows etc.

Perfect supply system

The enterprise pursues the objective of "being centered by clients". It establishes the perfect supply system. It can choose material nearby. It answers the clients as soon as possible. It offers prompt and convenient parts supply. It becomes the most powerful basic material guarantee in the service system. With coordination of the strong storage & delivery center, the customers can enjoy the more prompt and convenient service within the shortest time possible.

Considerate service

Professional repair & maintenance system

It regularly assigns repair and maintenance staff to test and maintain the elevators. It promptly finds the problems and remove any hidden danger in advance. It gives a full use of Web of Things technology. It fulfills organic linkage to elevator running condition test & alarm, emergency repair. It promises to arrive at site within 30 minutes. It provides vast clients with prompt and accurate repair & maintenance service.

